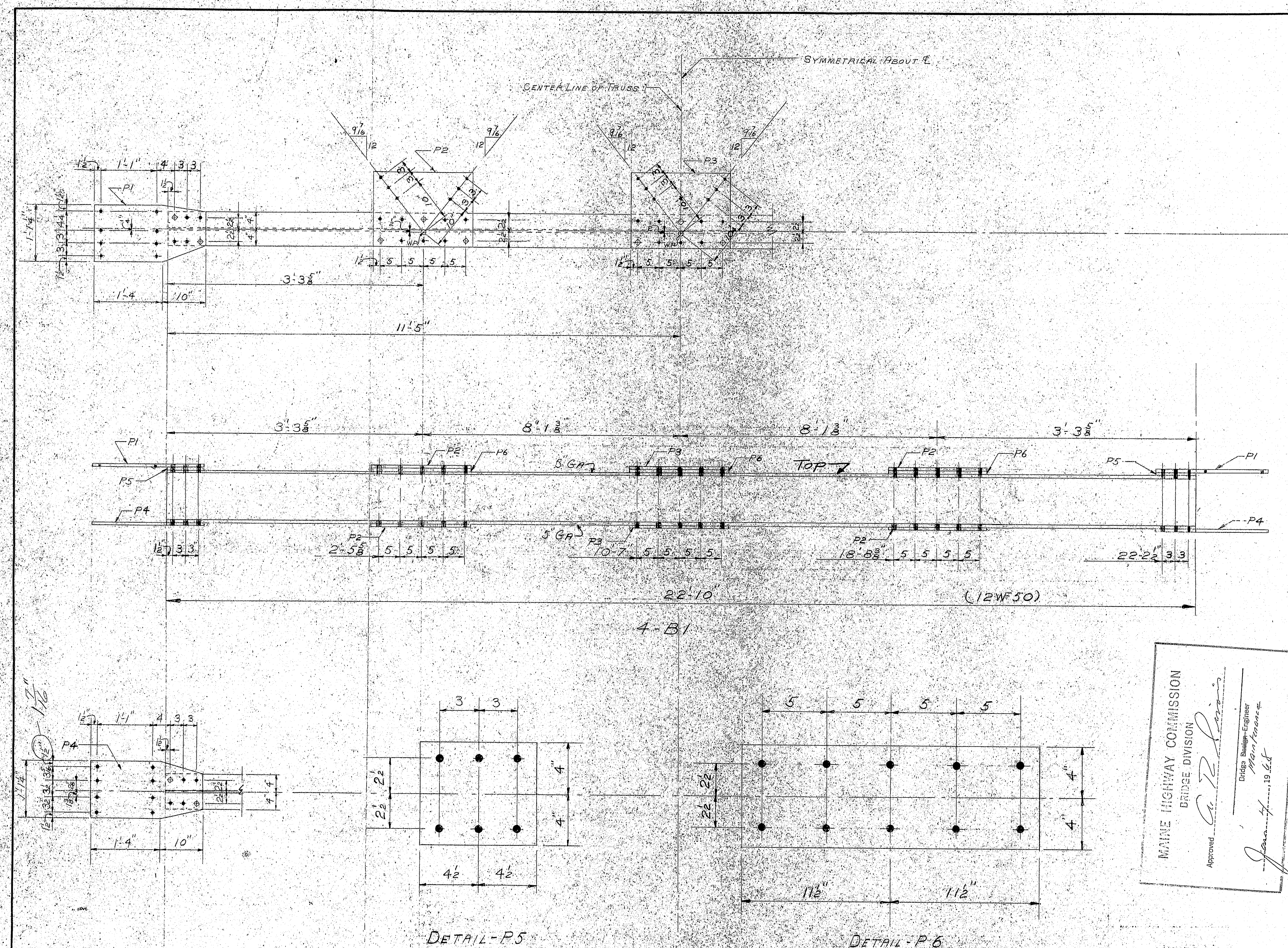


SHIP		BILL OF MATERIAL			JOB NO. B67-50	DWG. NO. S1
MARK	NO.	MARK	SHAPE	LENGTH	WT.	REMARKS
B-1	4		12 WF 50	22	10	
	8	P1	R 13 1/2 X 3	2	2	TEMP.
	16	P2	R 17 1/2 X 3	1	11	Do
	8	P3	R Do	1	11	Do
	8	P4	R 13 1/2 X 3	2	2	Do
	8	P5	R 8 X 1/2	0	9	
	12	P6	R Do	1	11	
	52	SHOP	3/8" H.S. BOLTS	0	2	A325
	52	Do	Do	0	3	
FIELD	132		Do	0	2	
Do	342		Do	0	2 1/2	
Do	294		Do	0	3	
Do	64		Do	0	3 1/4	
	104	SHOP	3/8" H.S. WASHERS			
FIELD	716		Do			
Do	128		3/8" WASHERS			BEVEL
STEEL: ASTM A36						
WELDING ELECTRODE						
SHOP CONN: 3/8" A325 H.S. BOLTS						
FIELD CONN: 3/8" A325 H.S. BOLTS						
HOLES: 15/16"						
PAINT: STATE OF MAINE SPEC.						
SPECIAL CLEANING: BLAST						
APPROVED:						
PORTALS						
PRINT DIST.						
Bancroft & Martin Inc.						
Brewer, Maine						
JOB: PORTALS - COVERED BRIDGE						
PRESQUE ISLE, ME.						
CUSTOMER: STATE OF ME. BUREAU OF PURCHASES						
DESIGNER: STATE HIGHWAY COMM. BRIDGE DIVISION						
3	FA	1-2-68	ORDER NO.	JOB NO.	DRAWING NO.	
REV.	DC	1-2-68				
CHECKED	DC	1-2-68	194 24936	B67-507	S1	
DRAWN	12-27-67	J.E.M.				

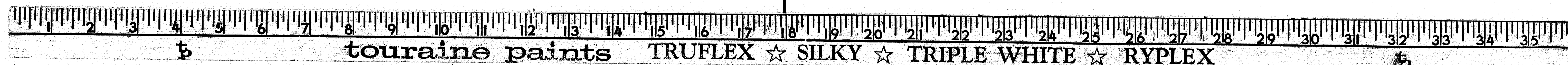
133:35



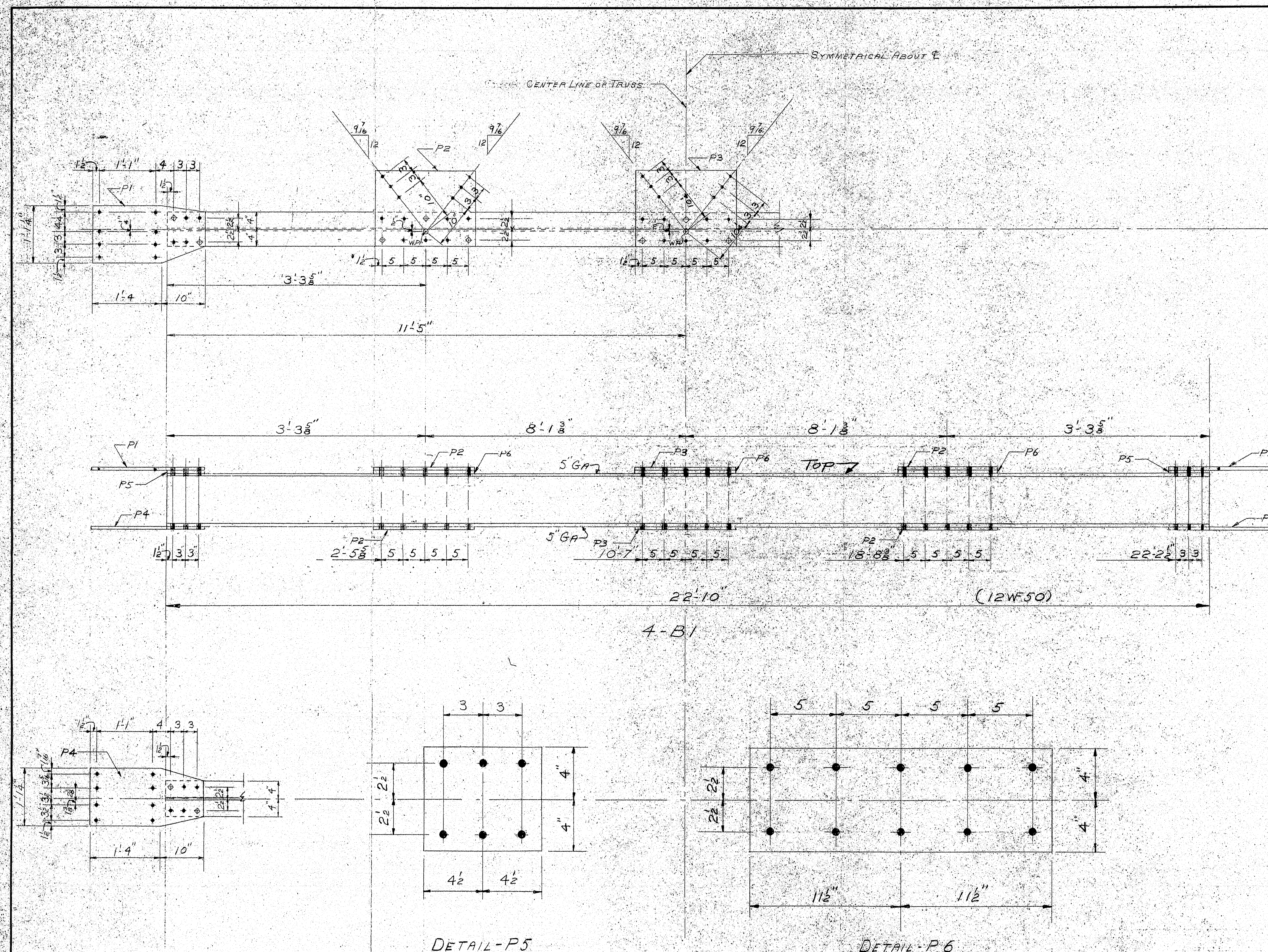


SHIP		BILL OF MATERIAL			JOB NO. B67-507	DWG. NO. S1
MARK	NO.	MARK	SHAPE	LENGTH	WT.	REMARKS
B-1	4		12 WF 50	22	10	
	8	P1	R 13 1/2 X 3	2	2	TEMP.
	16	P2	R 17 1/2 X 3	1	11	D.
	8	P3	R D.	1	11	D.
	8	P4	R 13 1/2 X 3	2	2	D.
	8	P5	R 8 X 1/2	0	9	
	12	P6	R D.	1	11	
	52	SHOP	3/8" H.S. BOLTS	0	2	A325
	52	DO	DO	0	3	
FIELD	132		DO	0	2	
DO	342		DO	0	2 1/2	
DO	294		DO	0	3	
DO	64		DO	0	3 1/2	
	104	SHOP	3/8" H.S. WASHERS			
FIELD	716		DO			
DO	128		3/8" WASHERS			BEVEL
STEEL: ASTM. A36						
WELDING ELECTRODE						
SHOP CONN. 3/8" A325 H.S. BOLTS						
FIELD CONN. 3/8" A325 H.S. BOLTS						
HOLES: 1/8"						
PAINT: STATE OF MAINE SPECS.						
SPECIAL CLEANING: BLAST						
APPROVED:						
PORTALS						
PRINT DIST.						
Pancroft & Martin Inc. Brewer, Maine						
JOB: PORTALS - COVERED BRIDGE PRESQUE ISLE, ME.						
CUSTOMER: STATE OF ME. BUREAU OF PURCHASES						
DESIGNER: STATE HIGHWAY COMM. BRIDGE DIVISION						
REV.	FR.	1-268				
CHECKED	DO	1-268				
DRAWN	12-27-67	J.E.M.	19 H 24936	B67-507	S1	

133:36







SHIP		BILL OF MATERIAL			JOB NO. B67-507	DWG. NO. S1
MARK	NO.	MARK	SHAPE	LENGTH	WT.	REMARKS
B-1	4		12 WF50	22' 10"		
	8	P1	R 134 X 3/8	2' 2"		TEMP.
	16	P2	R 17 1/2 X 3/8	1' 11"		D <sub>o</sub>
	8	P3	R D <sub>o</sub>	1' 11"		D <sub>o</sub>
	8	P4	R 134 X 3/8	2' 2"		D <sub>o</sub>
	8	P5	R 8 X 1/2	0' 9"		
	12	P6	R D <sub>o</sub>	1' 11"		
	52	SHOP	3/8" H.S. BOLTS	0' 2"		A325
	52	D <sub>o</sub>	D <sub>o</sub>	0' 3"		
FIELD	132		D <sub>o</sub>	0' 2"		
D <sub>o</sub>	342		D <sub>o</sub>	0' 22"		
D <sub>o</sub>	294		D <sub>o</sub>	0' 3"		
D <sub>o</sub>	64		D <sub>o</sub>	0' 34"		
	104	SHOP	3/8" H.S. WASHERS			
FIELD	716		D <sub>o</sub>			
D <sub>o</sub>	128		3/8" WASHERS			BEVEL

STEEL ASTM. A36  
 WELDING ELECTRODE  
 SHOP CONN. 3/8" A325 H.S. BOLTS  
 FIELD CONN. 3/8" A325 H.S. BOLTS  
 HOLES: 1/8"  
 PAINT: STATE OF MAINE SPECS.  
 SPECIAL CLEANING: BLAST  
 APPROVED: JAN. 4, 1968

ERECTION PRINT

PORTALS			
PRINT DIST.	Bancroft & Martin Inc. Brewer, Maine		
	JOB: PORTALS - COVERED BRIDGE PRESQUE ISLE, ME.		
6 SHOP 1-8-68	CUSTOMER: STATE OF ME. BUREAU OF PURCHASES.		
3 DUST 1-8-68	DESIGNER: STATE HIGHWAY COMM. BRIDGE DIVISION		
3 FA 1-2-68	ORDER NO. JOB NO. DRAWING NO.		
REV. DC 1-2-68	19H 24936 B67-507 S1		
CHECKED DC 1-2-68			
DRAWN 12-27-67 J.E.M.			